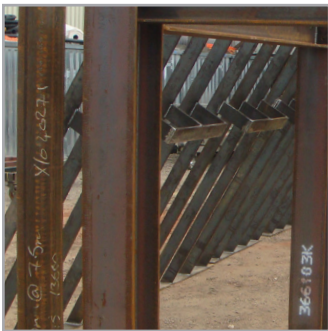


//MAINTENANCE //REFURBISHMENT //NEW BUILD

PROJECT WEED RACK FABRICATION



Stonbury were engaged to fabricate and install a new weed rack as part of the Environment Agency WLMP programme at Bodenham, near Salisbury. The weed rack was fabricated to EA specifications inhouse.

Prior to delivery and installation, a full assembly of the rack was carried out to check for accuracy. The structure was then sent away to be galvanised to the required standard and delivered to site in kit form, before installation directly into the river.

The installation presented challenges in terms of access and the construction of suitable foundation slabs. This involved the deployment of specialist coffer dams and the temporary diversion of the carrier stream.

The weed rack was installed with an associated timber walkway to provide access for future maintenance work and to an in-channel island with oak sluice gates to regulate the flow across the structure.